

The Ripples.....

On Eagle Lake

The African Queen comes to Eagle Lake



The original African Queen boat was 'in the movies.' Humphrey Bogart was steering her down the river in the Classic 1951 film. Recently this old boat was renovated and now is cruising daily in the Florida Keys. Eagle Lake also has its own African Queen! Thanks to the generosity of Nellie and Ed McCarthy (The Island), who donated their 24-foot pontoon boat to the ELMD, the Harvesting Crew now has a way to pick up weeds along the shallow lake shoreland. As summer lake water levels become lower, the harvester has been unable to get close to the shore.

The McCarthy's boat also needed to be renovated. Don Hermes, a retired Marine Dealer, quickly rose to the challenge of repairing the broken engine. Don, Mickey McNamara and his buddy Rocky removed the top aluminum structure and then recovered the deck with 4x8" treated plywood.

THANKS to the McCarthys, Don, Mickey and Rocky. Look for the boat on the Lake!

MORE LAKE NEWS:

Due to warm weather in early March, the ELMD was able to get both harvesters and shore conveyors in on March 16th. The Crew consists of two experienced crew from last year plus two new crew members. All four have been trained in harvesting operations. Don Hermes continues to supervise the Crew.

While the crew has been doing plenty of shoreline clean up, they were not allowed to harvest weeds until April 26. The lake had been chemically treated April 12th for Curley Leaf Pondweed and Eurasian Water Milfoil and there was a 2-week waiting period before harvesting could begin. Lets hope for a GREAT harvesting season!!!!

Garlic Mustard Update

Garlic mustard plants are back in full force around the lake. In late March the plant was easy to identify because the little white flowers were blooming.

Garlic Mustard has a two-year life cycle. The first year plant is a small rosette of round, scalloped-margined leaves that stay semi-evergreen through winter. The second year plant sends up a flower stem with triangular toothed leaves with tiny white flowers. Those flowers soon give way to elongated seed pods that, when mature, can bear up to 500 seeds per plant. The plant will be about 3-4 feet tall at this point.

Control strategies must continue for 8 or more years, until dormant seeds are all destroyed. Vulnerable areas, especially woodlands, should be monitored each spring to promptly detect new invasions and prevent reoccurrence.

Eradication efforts are taking place around Eagle Lake.

(cont. page 2)



**ELPOIA EDUCATIONAL TALK
PIGGYBACKS ON ANNUAL PLANT SALE**

Go Native
Native Plant Sale Expo
June 2, 2012 9 a.m. - 3 p.m.

Seno Woodland Education Center
3606 Dyer Lake Road Burlington 53105

1,000's of native plants for
sun, shade, wet, dry and in-between.
Need plants for birds and butterflies?
We have them.
Shrubs, Trees and vines too!

Join us for an exciting day of plants,
vendors and tours at
Seno Woodland Education Center
in Burlington.

Presented by the Root River Chapter of Wild Ones

 info and questions:
(262) 881-4899
native.plant.olyvert@gmail.com

Nan Calvert, from "Wild Ones" will be presenting on what types of Native Plants can be used on shoreland restoration projects, i.e. what plants work best on a sunny lake bank or a shady bank, how you can prevent lake bank erosion, etc. ELPOIA will also have presenters explaining Racine County Ordinances that deal with shoreland restoration projects.

This 15-minute presentation will be made at the Eagle Lake Management District's Annual Meeting, on Saturday, May 26th at 10:00 a.m. We thank ELMD for allowing us time on their agenda! Be sure to attend this important meeting to learn about current lake conditions and about how to take on a restoration project on your lake bank.

CLEAN BOATS--CLEAN WATERS PROGRAM

--will be in operation this summer at the Eagle Lake County Park, Church Road. It will be a cooperative effort between ELMD and ELPOIA. ELPOIA has contributed \$2000 towards staff salaries, while ELPOIA will hire the staff and coordinate hours of operation. Staff will be present on weekends throughout the summer months to show boaters how to keep invasive species from entering our lake.

GARLIC MUSTARD (Cont. from page 1)

ELPOIA has been involved in an intense campaign to clean up this highly invasive plant. Large populations have been found in Pan Yack Park, along North Shore Drive, in the Terrace and the Manor (including Nature's Bend) and along Church Road. Eradication efforts, including hand pulling and spraying, are currently taking place. We are asking all people around the lake and watershed to look for this plant and to take steps to eradicate it before seed pods mature and send thousands of seeds into surrounding green spaces, road sides and farm fields.

If you are pulling garlic mustard with seed pods present, you will need to bag the plant. Seeds can still ripen after plants are uprooted, using energy stored in stems and leaves. You can bag them in plastic bags and set them out for garbage pickup and a trip to the landfill. Bags should be labeled as "Invasive Plants--approved by DNR for landfilling".

If you place plants in paper bags, they can be disposed of by burning, providing the fire is hot enough. Please dry the plants thoroughly before paper bagging and burning. Do NOT compost garlic mustard, as few compost piles produce enough heat to destroy all seeds.

Remember, EACH plant is capable of producing between 100-500 seeds. For more information re: Garlic Mustard and how to control it, please log on to



Above are harvester crew members (from left) Clinton Weiss, Matt Dillon, GJ Stevens and Dillon Nielsen helping North Shore owner Mick McNamara with garlic mustard eradication.

--the DNR website: www.dnr.wi.gov, the Lake Website: www.eaglelake.racinecounty.org or the Town of Dover website: www.townofdoverwi.co.

NEW RESTAURANT



The former Giovanni's/Camelot Shores/Eagle Inn on the Lake will begin a new chapter soon as "Michael's on the Lake". The restaurant on the south shore of Eagle Lake was purchased and will be run by Mike and Theresa Molitor, Union Grove, with help from their son, David (who will concentrate on the bar) and their daughter, Kim (a chef trained at Le Cordon Bleu Culinary School). For the past six years, Kim has supervised several of the kitchens at the Hilton Milwaukee City Center, including the banquet kitchen and Chop House.

Active members of St. Robert Bellamine Parish, the Molitors are also involved in civic organizations. The family has already inquired about the right plants to use along the lake shore and has indicated a willingness to take on its new role as good lake stewards.

The Molitors spent the winter months cleaning and scrubbing, and with the help of an interior designer, are completely redecorating (farewell to Giovanni's light blue upholstery). They have also been testing handmade pizza and other recipes on family and friends while they put together a menu to satisfy everyone from the casual dinner to the folks out looking for a good steak dinner.

Mike said the family's goal is to have the main restaurant open by Memorial Day and the Banquet Halls by the end of the summer. He said, "Stop in and say Hi. We're looking forward to welcoming everyone back to enjoy the lake and our food."

Article by Marie Frederick

MORE FOOD NEWS.....

Plans for a brand new restaurant in Kansasville are underway at the southwest corner of State Highways 22 and 75. Karen Ament, Town of Brighton, is converting the previous two-apartment home at that busy intersection into a cafe-with a drive-through window. Her "Crossroads Cafe & Bakery" will be open later this summer for breakfast and lunch with coffee, soup, salad and sandwich combinations; and doughnuts, cinnamon rolls, muffins and other desserts. Everything is homemade.

With the large yard and outdoor seating, Karen said she hopes to entertain farmers markets and fundraising events with local groups and charities. In the evenings, she'll host cookie and cake-decorating classes and craft seminars. Plus, she sees the parlor room and its comfortable seating as a perfect place for parties and showers.

Crossroads decor will bring old Kansasville back to life as Karen hunts for old photographs of Dover to hang on the walls. She will appreciate and make copies of pictures that people are willing to share. Article by Marie Frederick

BITS & PIECES

-Don Hermes will again be selling Eagle Lake Flags for your piers and/or boats. Order forms can be sent out via email or call Don at 878-4338.

-ELPOIA is considering selling Eagle Lake -- It's Up to YOU! tee-shirts and sweatshirts again. If interested in ordering one, call Judy Amundsen at 878-2195.

-ELPOIA will have a book case filled with reference materials on water and lake issues in the near future at the Dover Town Hall. You will be able to check these materials out for your use.

-Cindy Stone, Webmistress of the Lake's website, has been hard at work updating the site: www.eaglelake-racinecounty.org Go take a look. And THANKS, Cindy!!!!

Calendar

- May 26th: ELMD Public Hearing on Budget (9:00), Annual Meeting (10:00)
- June 2nd: Wild Ones Native Plant Sale, Seno Woodland Center
- June 16th: Dover Clean Up Day
- July * : Kansasville Fire Dept Annual Pancake Day *To be determined
- July 25-29th: Racine County Fair
- Aug 11th: ELPOIA Annual Meeting Dover Town Hall, 9:00 a.m.
- Aug 18th: Dover Clean Up Day
- Aug 25th: Kansasville Hometown Picnic, Venetian Night and Fireworks
- Oct 20th: Dover Clean Up Day

DNR News

Recent Fish Management Activities Report: Doug Welch



Northern Pike surveys were conducted on March 6 and 10th. Most fish were 17-28 inches long and in good condition. Because of

the high population found, 559 northern between 15-19 inches were removed and transferred to Sheboygan Marsh. There are no plans to remove additional northern in the future.

A largemouth bass electrofishing survey was done the night of April 15th. The entire shoreline was sampled. The bass were in good condition and good numbers of young bass were observed. Also observed were bluegills, although they were not stocked in our lake after the fish kill. One bluegill caught was 9.8 inches long.

More information re: the current fish populations found in Eagle Lake will be presented in detail at the upcoming ELMD Annual Meeting. Be sure to attend to hear the latest news regarding lake conditions.

WATER MONITORING ACTIVITIES AROUND THE LAKE

Land use and stream health have a direct connection to Eagle Lake's water quality, so efforts to create vegetative buffers and educate landowners off the lake in the watershed have become a prime focus of groups like ELMD, ELOPIA and the Joint Watershed Task Force.

To better understand this connection, monitoring the water and aquatic life flowing into the lake from Eagle Creek Inlet (East side of the lake) resumes this spring and volunteers are needed to help take samples.

Two or three people meet at the inlet where it crosses under Highway 75 and perform a battery of simple tests to gauge stream health. Other inlets can certainly be tested, but we would have to have more volunteer teams.

Here is what we test and why:

* **Water clarity** is an easy way to spot farm runoff and discharge problems.

* **Stream flow and velocity** create habitat for wildlife, fish and organisms.

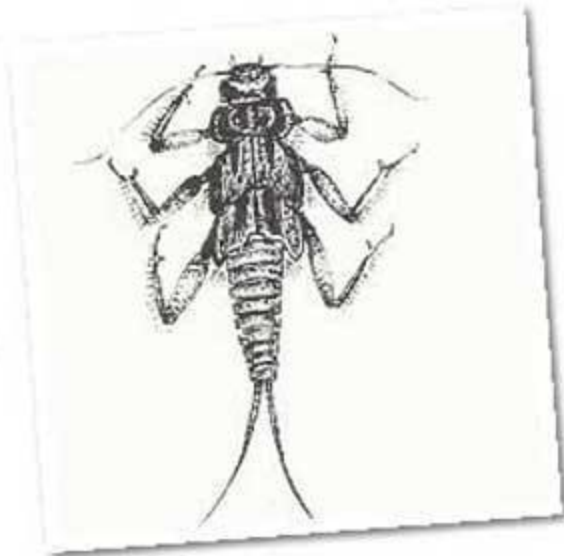
* **Dissolved oxygen concentrations and temperature** determine the type of aquatic life a stream can support. Do you want carp or trout living in your streams?

* **Biotic Indexing** samples aquatic insects and organisms and paints a picture of stream health. For example, a stonefly larva is sensitive to pollution but an aquatic sowbug can tolerate just about anything.

The volunteer time commitment is one day a month, approximately two hours in the early morning and/or two hours in the afternoon. Older children and teens are encouraged to volunteer because getting into the water and finding interesting bugs are GREAT adventures!

Please e-mail or call Marie Frederick to become part of a stream monitoring team this summer: frankie@wi.rr.com or (262) 497-3270.

ELPOIA wants to thank Marie for all of the work she does on behalf of Eagle Lake. She is just one of many volunteers around the lake that have 'stepped up' and helped the lake!



Stonefly Larvae—one of the good critters we want to find in Eagle Creek Inlet.

MORE WATER MONITORING ACTIVITIES AROUND THE LAKE

In addition to the above Inlet Stream monitoring activities, Lake Consultant Kathy Aron will be working for the ELMD to continue her ongoing assessments of plant life and water quality in the lake. She will be conducting another plant survey to see what changes may have taken place since last year. "So far," she reports "each year has been dramatically different, so we will see what this year brings." Aron will also be collecting monthly water quality samples. "Sample results will tell us what the phosphorus levels are in the lake," she said. Lastly, she will be collecting water quality samples at various locations leading into the lake to see what the phosphorus levels are and to try to identify problem areas to work on.

WHY BE CONCERNED WITH WATER QUALITY?????

Lately we are hearing more about situations where the quality of water is not good enough for normal uses. Bacteria and microorganisms have gotten into drinking water supplies, causing illness. Sewage spills have occurred, forcing people to boil their water and/or close beaches. Oil spills endanger plant and animal life. Runoff containing pollutants such as phosphorus channel into streams and lakes leading to excessive aquatic plant growth. We all need to become more "Water Smart" and treat our water with more respect. Learn about "50 WAYS TO BE WATER SMART" at www.sfwmd.gov. Quiz: How many gallons of water do you use per minute when taking a shower? Answer: about 5 gallons of water are used every minute in the shower. If you spend 3 minutes less in the shower, you will save 15 gallons of water per shower.
