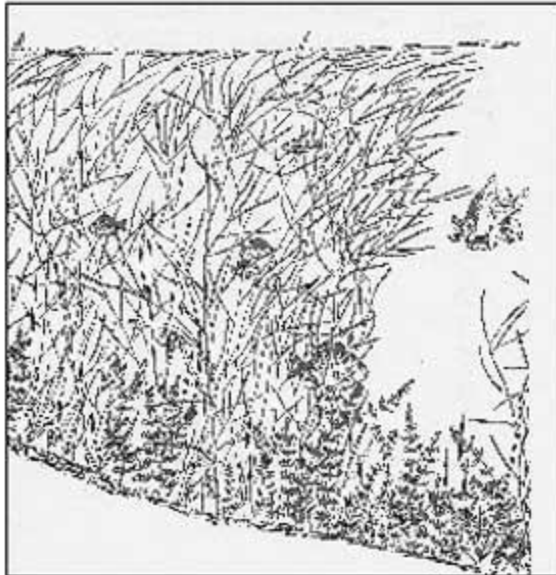


# THE RIPPLES

## Lakes need aquatic plants

Information from *Guide to WI Aquatic Plants*, WDNR



In their natural state, Wisconsin waters are protected by thick and diverse shoreline vegetation. Look under water and you will also see diverse aquatic vegetation, one-celled organisms, snails, insects, green plants and fish. They all play important roles in the life of that lake. Remove any one and you risk upsetting its balance, which could lead to changes you neither wanted nor expected. Aquatic plants, often times called "Weeds", are a source of frustration to people who (cont. p. 2)

### ANNUAL MEETING

ELPOIA is having its annual meeting on August 11th at 9:00 a.m. at the Dover Town Hall. Please plan to attend and hear about lake conditions and how YOU, as an individual, can help make a difference to problems facing the lake.

Local farmer, Barney Lavin, will be speaking about the value of WETLANDS and explain how he has been converting some of his land into wetlands to provide crucial habitat for wildlife, to prevent flooding, to buffer runoff and to improve water quality.

Information about the June 29th Goose Roundup, the algae problems facing the lake, current fish populations and reports from ELMD and the DNR will be on the agenda. PLEASE COME!!!!

### USEFUL PLANTS? OR WEEDS????

The sago pondweed, found in LARGE quantities in Eagle Lake, does have value. It provides some cover for bluegills, perch, northern pike and muskellunge; good cover for walleye; provides food for waterfowl (Sago is excellent wildlife food and some people plant its tubers to attract waterfowl), and supports insects valuable as

WATER LILY  
Najas sago



food for fish and ducklings. In addition, removing pondweeds may allow less-desirable aquatic plants to move in, such as curly-leaved pondweed. The DNR considers Sago Pondweed to be a native plant and only allows cutting for navigational channels around the lake. And that, said Paul Harvey, "Is the rest of the story....."

**WHERE WATER MEETS LAND (CONTINUED FROM P. 1)**

live on a lake. Weeds are defined as unsightly plants growing in abundance where they are not wanted. However, a weed to one person may be a beautiful plant to another. That aquatic plant you despise because it wraps around your boat prop can be the same one your neighbors cherish because bluegills nest near it. Are you right in wanting it removed??? Are they right in wanting it to stay???

Although excessive plant growth isn't good for recreational activities or fishing, the extreme opposite—a plant-barren lake bottom—is much worse. Aquatic plants play an essential and beneficial role in the life systems of most lakes because they:

- produce oxygen and organic material which help keep the lake and organisms in the lake alive.
- Their leaves and stems are home to insects and small attached plants.
- They provide spawning areas, food and protective cover for fish. Shoreline and shallow water plants harbor small fish (minnows and fry for many species) throughout the fishing season. Northern pike and largemouth bass like shallow, "weedy" water. Perch spawn on plants, muskies spawn on dead, decaying vegetation.
- Their roots help stabilize the lake bottom.
- They help prevent shoreline erosion.
- decomposing plants return nutrients to the sediment and supply food for many small organisms living in the sediment.

So we DO need aquatic plants in our lake.....just not so many of them. To thwart excessive aquatic plant growth, we need to cut off surplus nutrients and sediments from flowing into our lake. Such things as reducing or curtailing fertilizer use near the lake, disposing of pet waste along the lake banks, and maintaining a vegetative buffer zone along shorelines can be the beginning of helping our lake get 'back on track' and enjoyable for everyone who uses Eagle Lake.

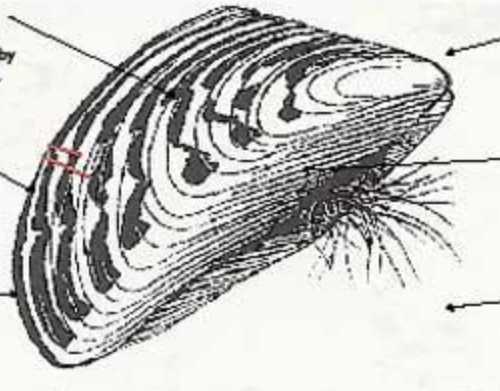
Learn more about healthy lake best-management practices by checking out ELPOIA reference materials from the new bookcase at the Town Hall.

**ZEBRA MUSSEL**

**ALERT!!!** Please help us keep them out of the lake by learning to recognize them.

Alternating dark and light colored stripes

Black to brownish D-shaped shells. Juveniles are about the size of peppercorns.



Adults can be 2" long, but most are less than an inch. They get in engine passages and block cooling systems.

They have byssal threads they use for attachment to just about surface type.

If found, immediately remove and bag them. Then call our local Sturtevant DNR office at (262) 884-2300.

ELPOIA is sponsoring 2 part-time Clean Boats—Clean Waters staff who will work at the County Boat Launch on Saturdays, Sundays and

Holidays. Their most important goal will be to keep Zebra Mussels from entering our lake. To date, no Zebra Mussels have been found in the lake. Let's keep it that way!

**Dover - Kansasville  
Hometown Picnic**  
Sat., Aug. 25, 2012, 12 - 9 p.m.  
Eagle Lake County Park, Church Road

• Kids' Fishing Derby & Boules • Petting Zoo  
• Firetrucks & Tractors • Local History Displays  
• Live Music • Food & Beer • Free Rootbeer Floats  
• "Where the Heck is Kansasville" T-Shirts

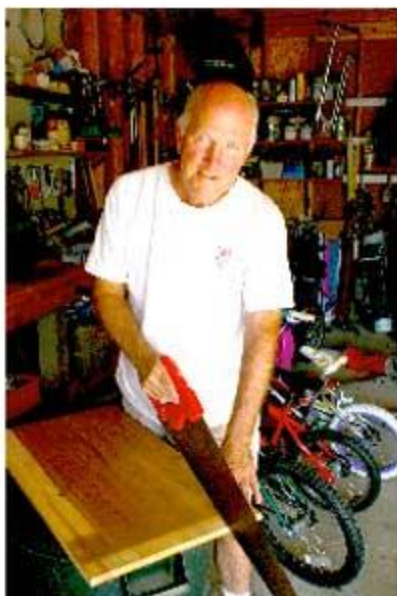
Bring your dog and jump Dog Dook! Prizes for top dogs.  
**Dog Dook Jumping**  
11-4 p.m.

**Aquaducks Ski Show**  
4-8 p.m. on Eagle Lake  
Sponsored by Eagle Lake Property Owners Improvement Assoc.

**Fireworks**  
8:30 p.m.  
Sponsored by Eagle Lake Management District

**Venetian Boat Parade**  
6:30-8:30 p.m.  
Get those boats out!  
1100 sponsored by ELPOIA  
and 100% of the profits go to ELPOIA.

Boat to you by the Dover-Kansasville Boatmen's Association. For more info: www.kansascityboatmen.com or 316.679.1247  
To participate in volunteer water safety float activities call 316.679.1247



Pictured above is Bob McEnroe, who lives in Pan Yack Park. He donated his time and talents to construct a special bookcase for ELPOIA. It houses educational materials on a wide variety of lake topics available for checkout by members. THANKS, BOB!

### EAGLE LAKE VENETIAN BOAT PARADE RULES

Saturday August 25th 6:30 p.m.

Anyone can enter any type of watercraft, but participants must register at the Kansasville Hometown Picnic on Sat., Aug. 25, 12-5 p.m. in Eagle Lake County Park. Look for the Welcome Tent.

Boats will begin lining up in front of the park at 6 p.m. in the order they arrive. Parade will start at 6:30.

*These rules must be followed in order to be judged:*

- Entrants must register their boat and pay a \$10 entry at the Hometown Picnic before the start of the parade.
- Each boat will be given a large number to display.
- Boats can be decorated in any manner as long as the theme is appropriate for family viewing and the boat does not present a safety hazard for its occupants or spectators.
- No fireworks of any kind will be allowed on any boat.
- Nothing may be projected or thrown from the boat.
- Boats must make two laps around the lake, beginning at the park and ending at the park!

Tips...

- Extra lighting and sound need extra power; your boat's battery can not handle it alone. Use an inverter or a generator.
- An IPOD or MP3 player hooked to stereo speakers works best for sound. A boom box may not be loud enough for people to hear on shore.

*Fireworks will follow the parade. Anyone with shoreline flares should light them after the fireworks finale.*

"If individuals and organizations were to pursue their own economic self-interests in accessing a given resource, (i.e. Eagle Lake), the resource would be put at risk of becoming depleted or destroyed and providing no value to anyone. Society (US!!!), therefore, has a responsibility to protect and maintain the commons so they will be available to both current and future generations."

*The Tragedy of the Commons* by Garrett Hardin (1968)

### IMPORTANT WEBSITES:

[www.eaglelake-racinecounty.org](http://www.eaglelake-racinecounty.org)

[www.tosnafdooverwi.co](http://www.tosnafdooverwi.co)

[www.wisconsinlakes.org](http://www.wisconsinlakes.org)

[www.dunsci.gov](http://www.dunsci.gov)

Comments about the newsletter? Contact Editor Judy Amundsen at [jramundsen@aol.com](mailto:jramundsen@aol.com)

**BRUTAL SUMMER FOR EAGLE LAKE**

Written by Ed Furey, ELMD President

The weather this summer has had a pronounced negative impact on our lake and the water quality. The absence of rain, a record heat wave, lots of sunshine and little to no wind have turned Eagle Lake into a sea of algae complete with ugly algae blooms.

Given the current conditions -- low water levels and poor water quality -- residents around the lake begin to wonder about what we might do to make things better. One area that receives a lot of ELMD's attention is the depth of the water.

This year, of course, we have a temporary lowered lake level caused by lack of rain, evaporation and an absence of any run off into the lake. In past years water levels have always fluctuated but it is more apparent this year due to the prolonged drought and extreme heat.

Still, some people feel that if we could make our lake deeper (via dredging our lake), water conditions would automatically improve. They equate deeper water with better water quality and fewer weeds. Unfortunately, the facts do not support this popular belief.

First of all you have to understand that no amount of dredging can remove all the nutrients on the bottom that feed the algae and the weeds. After spending, perhaps millions of dollars, we would still have the same problems we are facing today only the water would be deeper. Thus, we have concluded that dredging can only improve navigation in select areas.

Let's examine a few of the facts/hurdles for dredging:

- **Cost is prohibitive** without some massive grant money from unknown sources. Current estimates are \$15 to \$30 per cubic yard. To dredge 2 feet around the entire lake would cost between \$25MM to \$50MM. One foot would cost about 50% of these amounts. Limited dredging in, for example, only areas with less than 3' depths would still be in the \$3.5MM range. Divide these totals by the approximately 250 residents in the District and decide for yourself if we can afford it.
- **Permitting is not a given.** For example, the DNR will not permit us to dig holes in firm/sand areas because it results in these holes filling up with less desirable muck which will support weed growth.

Other restrictions will also limit the use of dredging.

- **Quality/purity of the sediment removed can be a project killer.** Disposal, even if the sediment is approved, can be very costly and is not included in the figures above. The site would have to be massive and, necessarily, close by.
- **Equipment** needs to be large enough to do the job and yet mobile enough to access the areas to be dredged.

*Never the less, the ELMD plans to continue to study and consider limited dredging to improve navigation in select areas.*

The only hope we have to improve current conditions this year is to hope and pray for some heavy rain falls, more wind and cooler days.



*Pictured above are ELMD staff Matt Kuchenbecker and Hera Halsey, inspecting a boat trailer as part of the Clean Boats--Clean Waters Inspection Program.*

**ANNUAL DUES NOTICE ATTACHED**

Residents who live on or near Eagle Lake are asked to continue supporting educational programs re: improvement of the lake by filling out the attached notice and sending it in along with your voluntary \$15 contribution. More money is always welcomed. :- ) THANKS!

**EAGLE LAKE  
PROPERTY OWNERS IMPROVEMENT ASSOCIATION, INC.  
KANSASVILLE, WI 53139**

Name.....

Address.....

City..... State..... Zip.....

**NOTICE OF VOLUNTARY ANNUAL DUES**

For the Year 2012..... **\$15 minimum**  
**More always welcome!!!**

RETURN TO: Judy Amundsen, ELPOIA Secretary  
24033 W. Oakwood Lane  
Kansasville, WI 53139